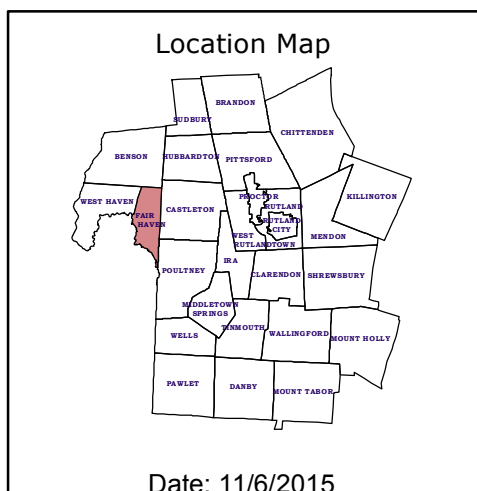
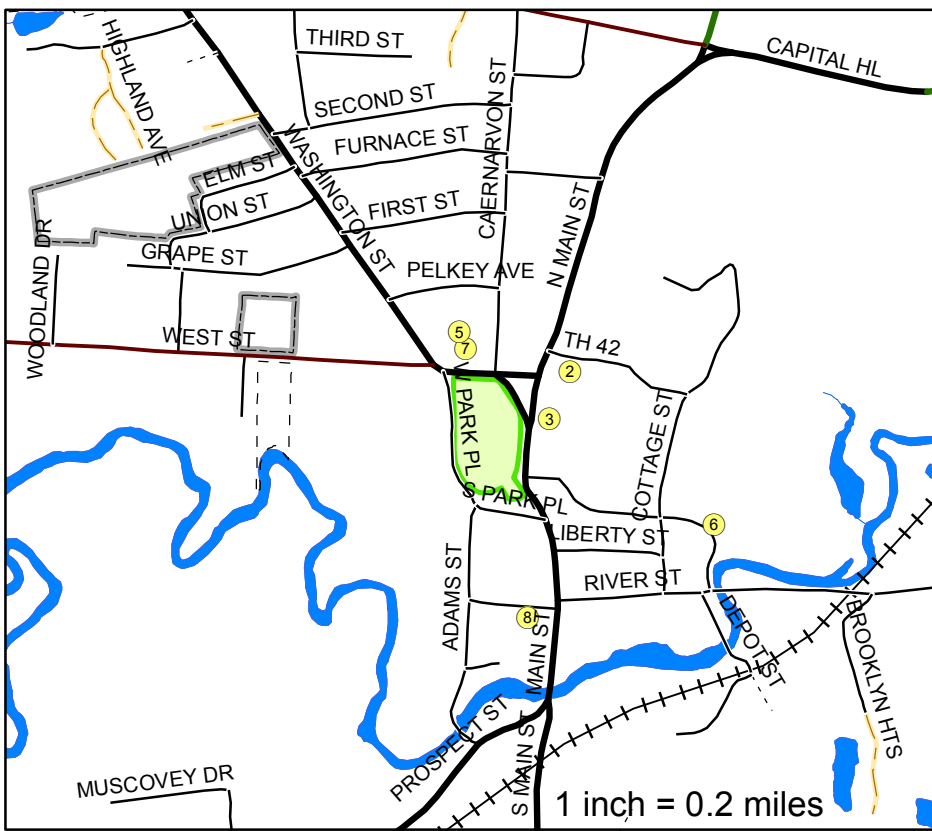
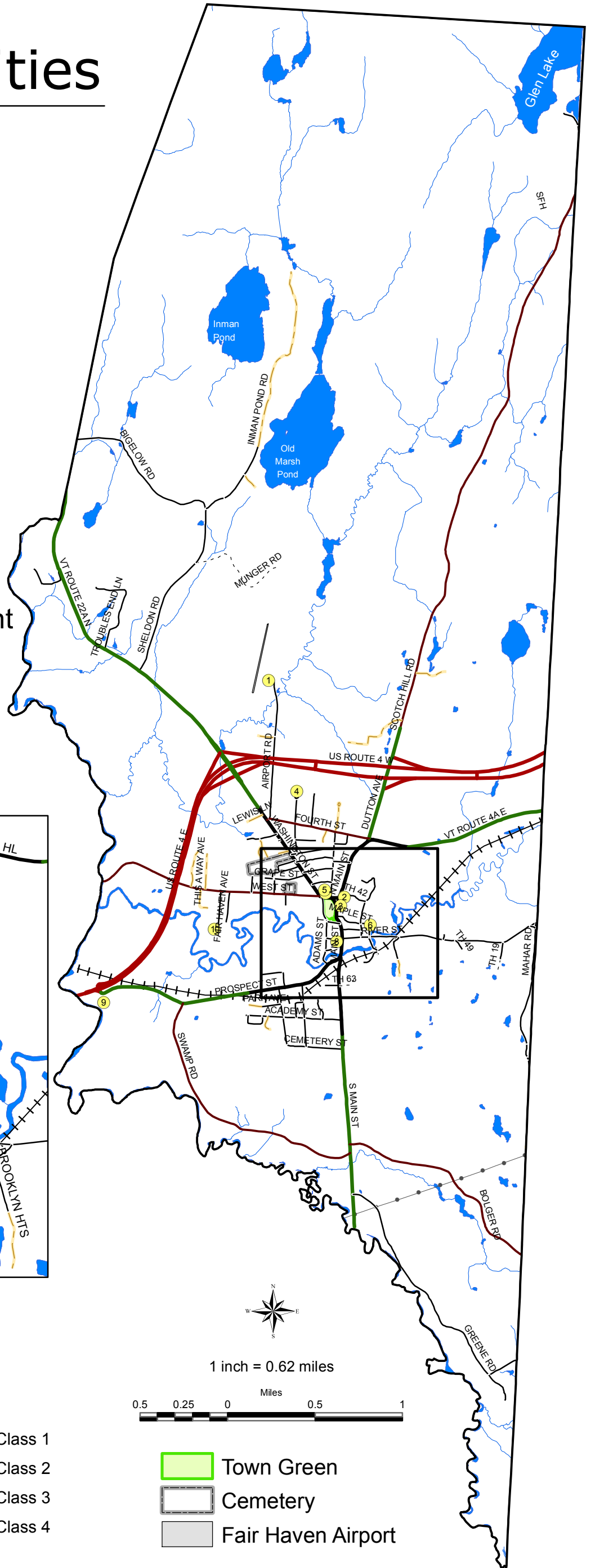


Education and Community Facilities

Fair Haven

Legend

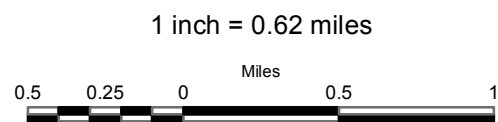
- ① Fair Haven Airport
- ② Fair Haven Grade School
- ③ Fair Haven Public Library
- ④ Fair Haven Union High School
- ⑤ Police Department
- ⑥ Town Garage
- ⑦ Town Offices & Fire Department
- ⑧ US Post Office
- ⑨ Vermont Welcome Center
- ⑩ Fair Haven Sewer Plant



Legend

- US Highway
- State Highway
- Town Highway Class 1
- Town Highway Class 2
- Town Highway Class 3
- Town Highway Class 4
- Private

- Electric Line
- ~ Rivers & Streams
- Lakes & Ponds



- Town Green
- Cemetery
- Fair Haven Airport

Map intended for planning purposes only.
 For more information, please contact:
 Rutland Regional Planning Commission
 The Opera House, Third Floor, PO Box 965
 Rutland, VT 05702 (802) 775-0871

Natural Resources

Fair Haven

Map2 of 2

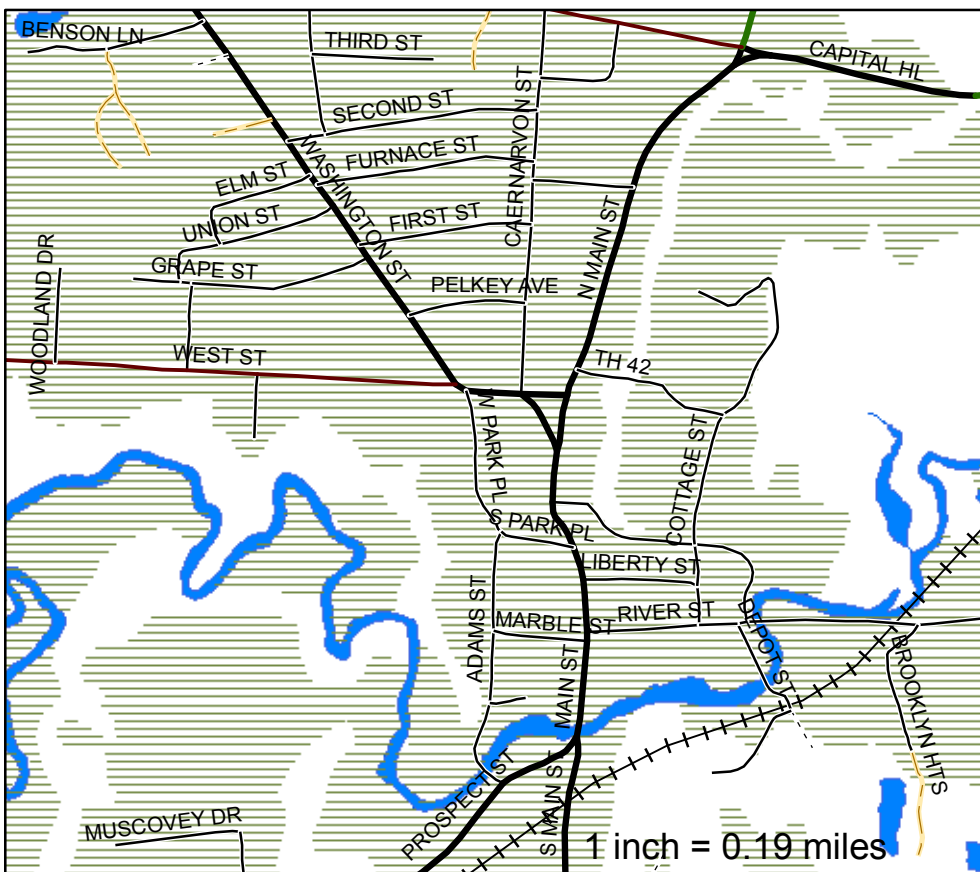
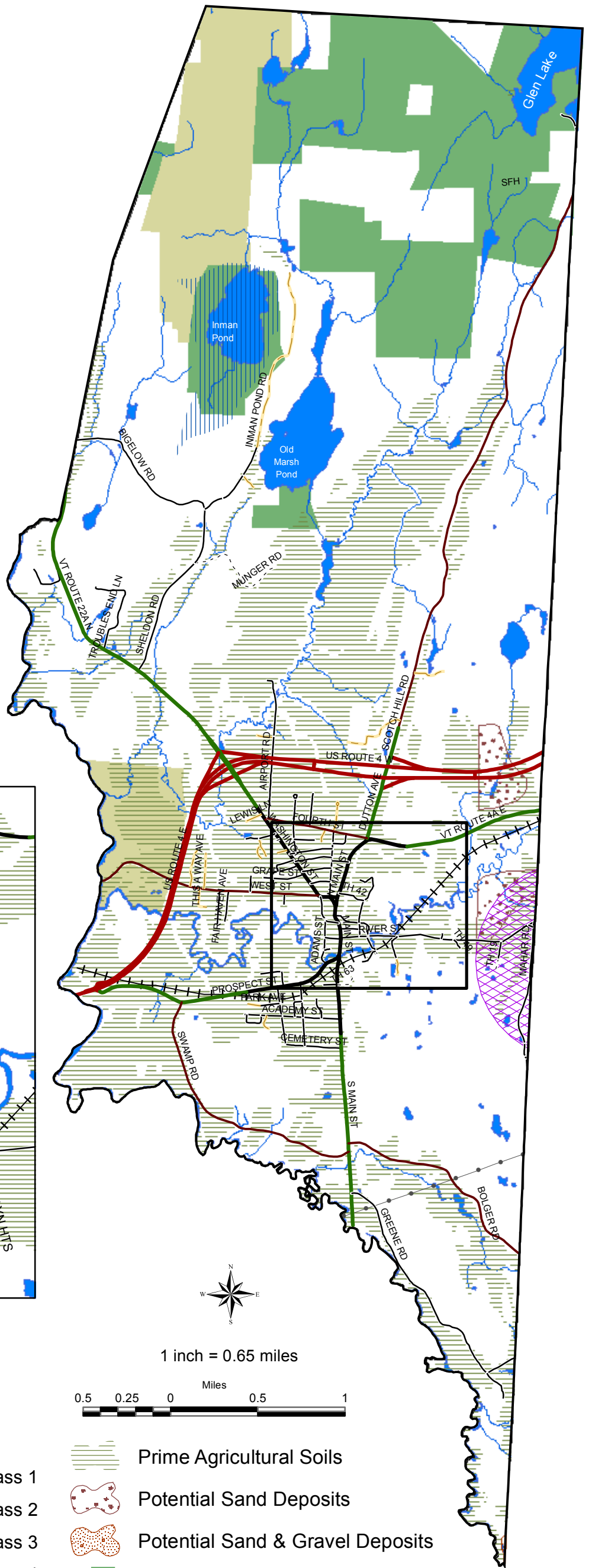
AGRICULTURAL SOILS: from VCGI database Geologic soils_SO, 2003. Prime, statewide and local are VT primary agricultural soils for Town and Act 250 planning. Natural Resources Conservation Service soil data are accurate to a resolution of three acres, unmapped "inclusions" up to three acres may exist in some areas. This information is generalized. It should not be used for the evaluation of individual sites. Soils shown are based on national USDA-NRCS criteria and have good potential to support the growing of crops.

SAND AND GRAVEL: The classifications of sand and gravel resources are based on information developed by USDA Natural Resources Conservation Service. Soil data are accurate to a resolution of three acres, unmapped "inclusions" up to three acres may exist in some areas. This information is generalized. It should not be used for the evaluation of individual sites. Soils shown are based on national USDA-NRCS criteria and have good potential for sand and gravel deposits.

PRIVATE CONSERVED LANDS - land in full or partial ownership by 501(c)3 conservation organizations (VLT, TNC, GMC, and others), a subset of the Vermont Conserved Lands database, 1999.

PUBLIC LANDS: VCGI dataset CadastralPublands_CONSPUB, 2004, a subset of the Vermont Conserved Lands database. It includes land owned by Municipal, State and Federal entities.

SOURCE PROTECTION AREAS Source Protection Areas (SPAs) include wellhead protection areas (WHPA) and watersheds feeding surface water intakes (SWSPA) supplying public community water systems and bottled water systems. SPAs are defined as the "surface and subsurface area from or through which contaminants are reasonably likely to reach a public water source." Source Protection Area (SPA) boundaries have been located on RF 24000 & RF 25000 scale USGS topographic maps by Water Supply Division (DEC) and VT Dept of Health (historical) personnel. Buffered SPAs are based on the point location of the water source(s). Data were last updated in 2011.



Location Map

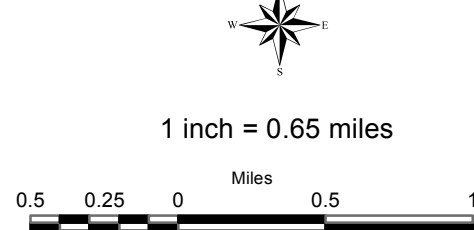
Date: 11/6/2015

Map intended for planning purposes only.
For more information, please contact:
Rutland Regional Planning Commission
The Opera House, Third Floor, PO Box 965
Rutland, VT 05702 (802) 775-0871

Document Path: E:\RRPC\FAIRHAVN\FH_NatRes2_2015.mxd

Legend

- US Highway
- State Highway
- Town Highway Class 1
- Town Highway Class 2
- Town Highway Class 3
- Town Highway Class 4
- Private
- Electric Line
- Rivers & Streams
- Lakes & Ponds



- Prime Agricultural Soils
- Potential Sand Deposits
- Potential Sand & Gravel Deposits
- Public Lands
- Private Conserved Lands
- Surface Water Protection Area
- Well Head Protection Area



Natural Resources

Fair Haven

Map 1 of 2

ROADS & RAIL: VT Enhanced 911 Board, 2014, VT Agency of Transportation, 2014, VT Center for Geographic Information.

ELECTRIC LINES: VT Electric Power Company, 2003.

SURFACE WATER: Vermont Hydrography Dataset using 1:5,000 digital orthophotos, USGS 7 1/2' quadrangles and 1:20,000 color infrared aerial photography and other data sources, 2013.

WETLANDS: boundaries are derived from National Wetlands Inventory (NWI, 2004) and the Vermont Significant Wetland Inventory (VSWI, 2010) and are approximate. Wetlands less than three acres in size may not be shown. The wetlands depicted are those regarded as regulatory by the VT Water Resources Board.

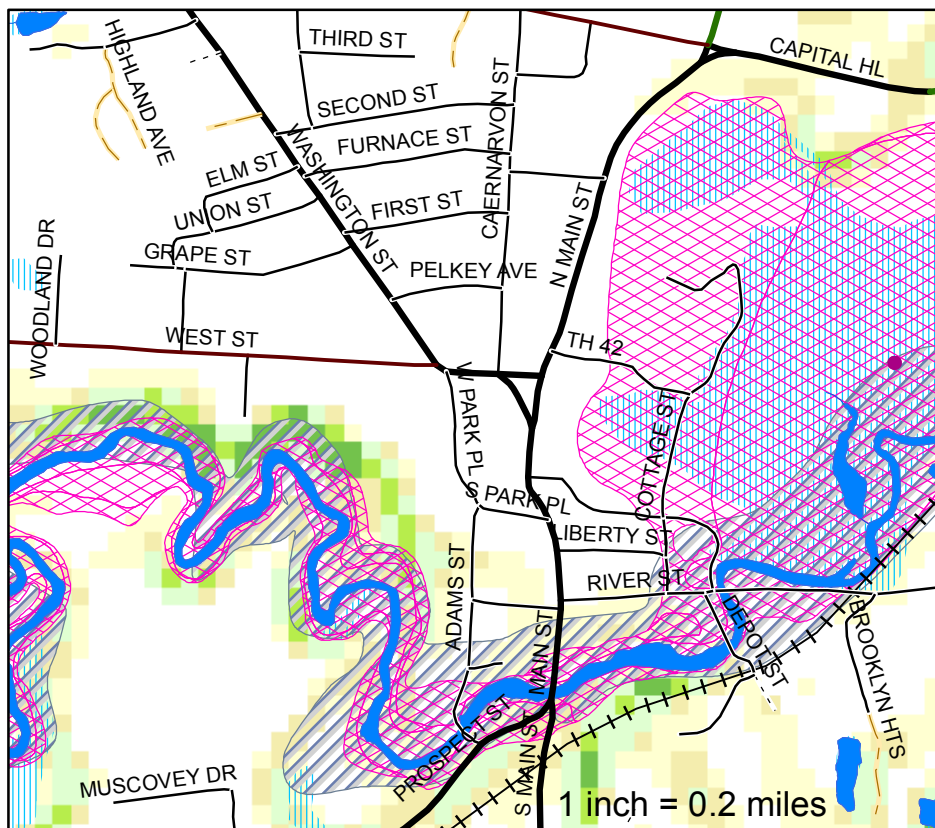
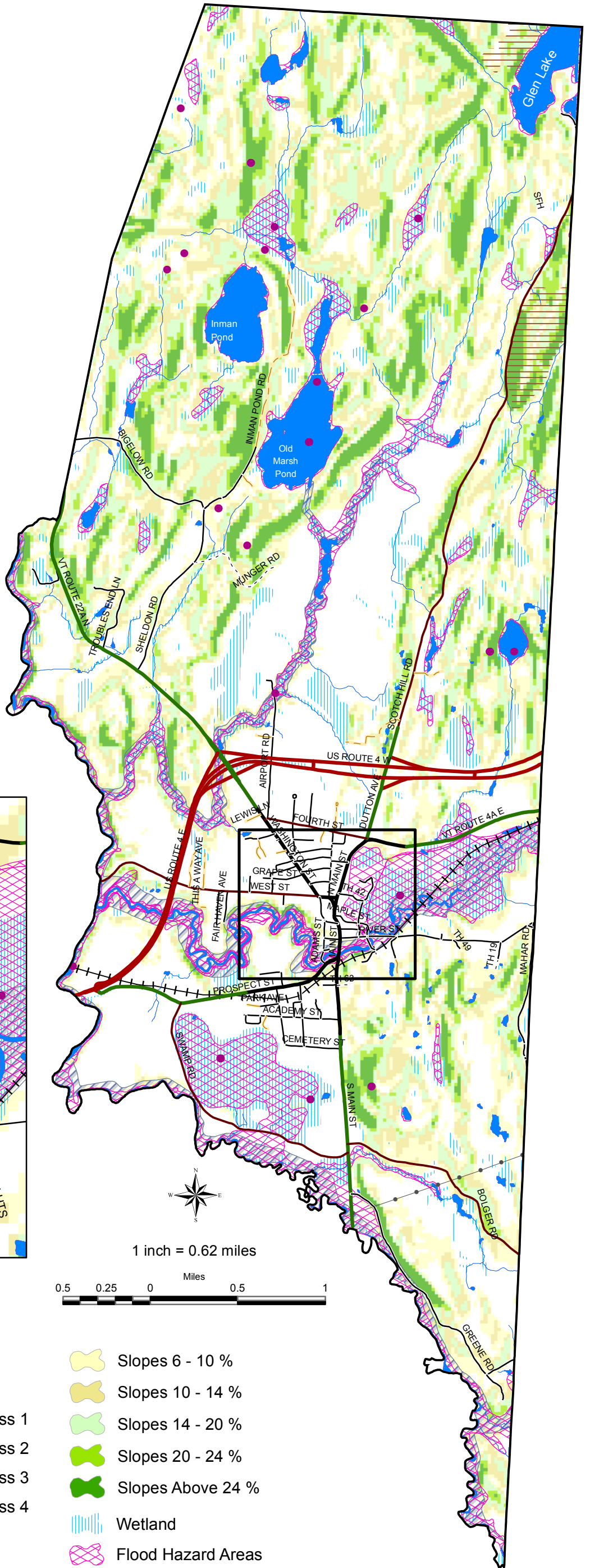
DEER WINTERING AREAS: EcologicHabitat_DEERWN, taken from 1:24000 and 1:25000 USGS topographic quads, Vermont Agency of Natural Resources, 2011.

RARE PLANT/ANIMAL SITES: Rare, Threatened and Endangered Species & Significant Communities, 1:24000, Vermont Nongame and Natural Heritage Program, VANR, 1997.

FLOOD PLAIN: DFIRM data from FEMA Digital Flood Insurance Rate Maps, August 2008. Floodplains for planning purposes only. Refer to the VANR_DEC, Water Quality Division, Floodplain coordinator for official floodplain determinations. (802) 241-3759.

VERMONT RIVER CORRIDOR DATASET: Please see the "Vermont DEC Flood Hazard Area and River Corridor Protection Procedures December 5, 2014" http://www.vtwaterquality.org/rivers/docs/FHARCP_12.5.14.pdf. Dataset release 01/07/2015.

SLOPE: Slopes generated from USGS NED based 7.5' DEM24 data, 2002



Location Map

Date: 11/6/2015

Map intended for planning purposes only.
For more information, please contact:
Rutland Regional Planning Commission
The Opera House, Third Floor, PO Box 965
Rutland, VT 05702 (802) 775-0871
Document Path: E:\RRPC\FAIRHAVEN\FH_NR1_2015.mxd

Legend

- US Highway
- State Highway
- Town Highway Class 1
- Town Highway Class 2
- Town Highway Class 3
- Town Highway Class 4
- Private
- Electric Line
- Rivers & Streams
- Lakes & Ponds
- Slopes 6 - 10 %
- Slopes 10 - 14 %
- Slopes 14 - 20 %
- Slopes 20 - 24 %
- Slopes Above 24 %
- Wetland
- Flood Hazard Areas
- Deer Wintering Areas
- Rare Plant/Animal Site
- Vermont River Corridor (1/07/2015)



Fair Haven Roadway Base Map (Including VTrans Classifications)

Fair Haven

Legend

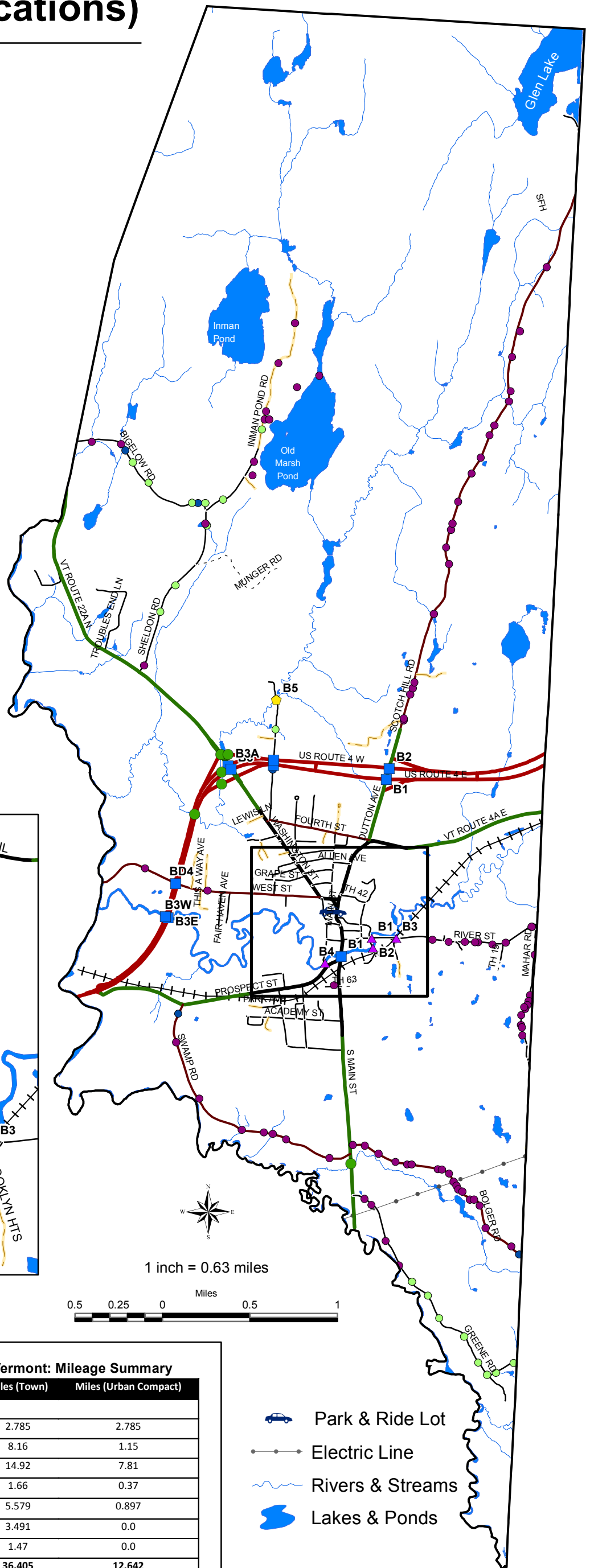
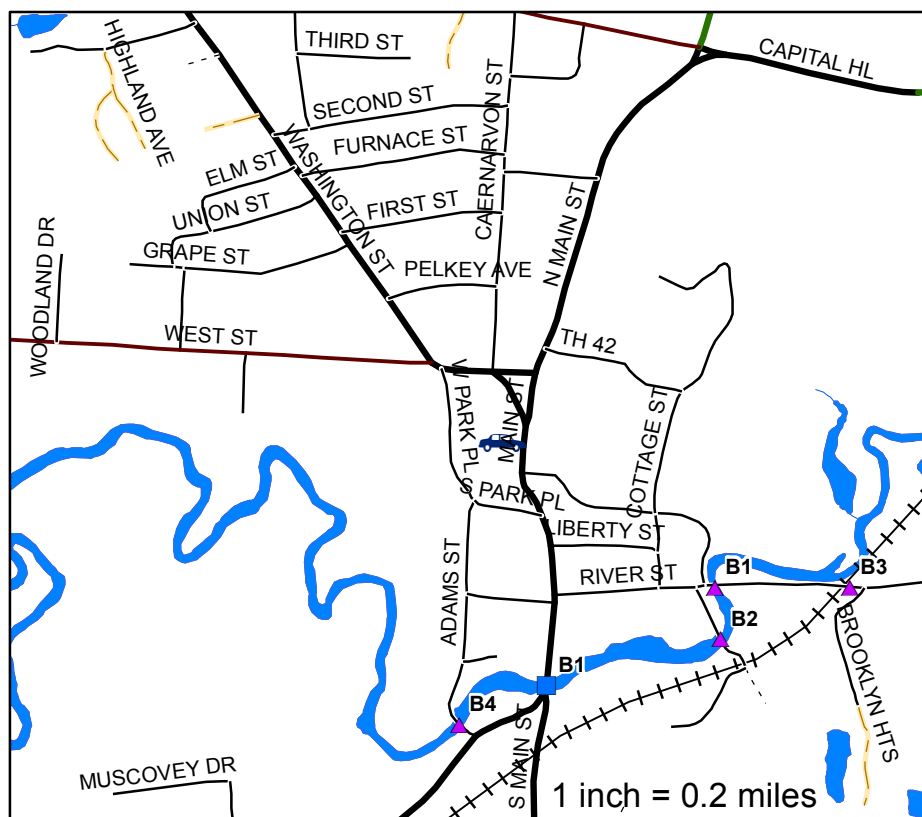
- US Highway
- State Highway
- Town Highway Class 1
- Town Highway Class 2
- Town Highway Class 3
- - - Town Highway Class 4
- Private

Bridges

- State Long
- State Short
- ▲ Town Long
- ◆ Town Short

Culverts

- Good and Fair Condition
- Poor and Critical Condition
- Closed, Urgent and Unknown Condition



Location Map

Date: 11/6/2015

Map intended for planning purposes only.
For more information, please contact:
Rutland Regional Planning Commission
The Opera House, Third Floor, PO Box 965
Rutland, VT 05702 (802) 775-0871

Document Path: E:\RRPC\FAIRHAVEN\FH_TRANS_2015.mxd

Town of Fair Haven Vermont: Mileage Summary

Highway Type	Miles (Town)	Miles (Urban Compact)
Class 1	2.785	2.785
Class 2	8.16	1.15
Class 3	14.92	7.81
Class 4	1.66	0.37
State Highway	5.579	0.897
U.S. Highway	3.491	0.0
U.S. Highway Ramp	1.47	0.0
TOTALS (Excludes Class 4, Legal Trails, and Unidentified corridors).	36.405	12.642

Information Sources:
Vermont General Highway Map, Town of Fair Haven, Mileage as of February 10, 2015.
Vermont General Highway Map, Urban Compact of Fair Haven, Mileage as of February 10, 2015.

Prepared by the Vermont Agency of Transportation
Division of Policy, Planning and Intermodal Development
in cooperation with
U.S. Department of Transportation Federal Highway Administration.

- Park & Ride Lot
- Electric Line
- Rivers & Streams
- Lakes & Ponds

